



**T**

# **PROSPECTUS 2019/20**

**TOTTON  
COLLEGE**

## Life at Totton College

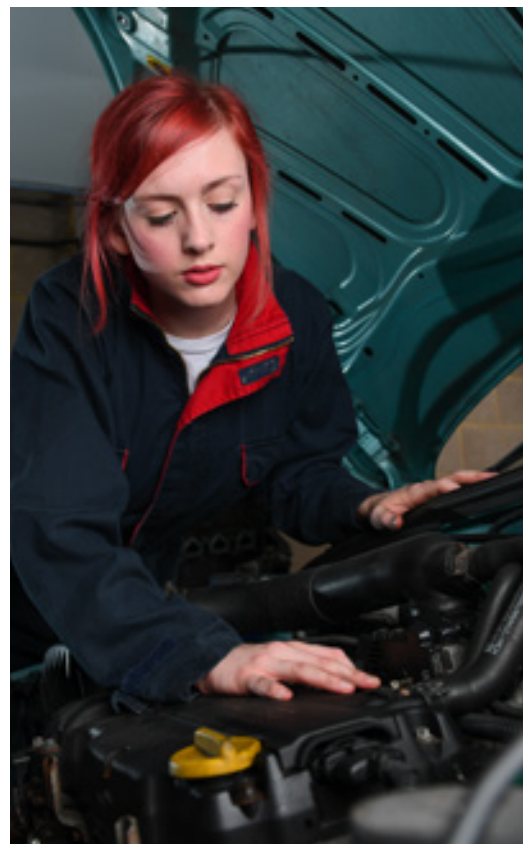
At Totton College, we provide first class vocational and technical education and skills training to all of our students. You can choose from a wide range of learning opportunities which will give you the skills you need to unlock your potential and get on the path to your chosen career.

Our modern, industry-standard facilities – which include a media suite, motor vehicle unit and hair and beauty salon – ensure that you have the opportunity to study in real-life working environments using top quality equipment.

We also work closely with local employers and businesses to offer the best volunteer and work experience, apprenticeship and employment opportunities for our students.

As you study with us, we will support you to develop confidence and self-esteem, and gain the qualities and qualifications that employers want, now and in the future.





# Contents

College facilities	6
Learner services	8
Information for parents and guardians	11
<b>APPRENTICESHIPS</b>	12
Your study programme	16
Choose your own path	18
<b>CHELSEA FC FOOTBALL ACADEMY</b>	20
<b>VOCATIONAL COURSES</b>	22
Art and design	23
Beauty therapy	26
Business and administration	29
Childcare	31
Creative media	34
Hairdressing	38
Health and social care	41
Motor vehicle maintenance	43
Music	45
Science	48
Sport	50
Uniformed public services	54
<b>FOUNDATION SKILLS FOR LIFE</b>	56
General vocational studies	58
Transitional pathways	60
Project Fresh	61
Questions you may have	62
Open evenings	63



# College facilities

## Opus Salon

Situated inside the college, Opus Salon provides a training centre of excellence to all of our hair and beauty students. Treatments are available to members of the public.

## Pinecones Nursery

An independently-run nursery, for children aged three months to five years, can be found on the Totton campus.

## Health club and gym

All students get free gym and swimming membership at Totton Health and Leisure Centre. In addition, the college's Sports Hub provides a specialist strength and conditioning gym which can be accessed by all students.

## Media suite

Our fully-equipped media suite allows students to work on multimedia, graphics, photography, film, design, scriptwriting, animation, radio and print-based media.

## TV studio

Our industry-standard TV and recording studio provides students from across the college an environment for creating high-specification production pieces.

## The Cove

Totton College is fully accessible, welcoming students with all levels of need. Our specialist learning area, The Cove, has a multi-sensory room, specialist simulated living environment and an outside garden. We offer a range of courses and opportunities to progress at all levels.

## Learning Resource Centre

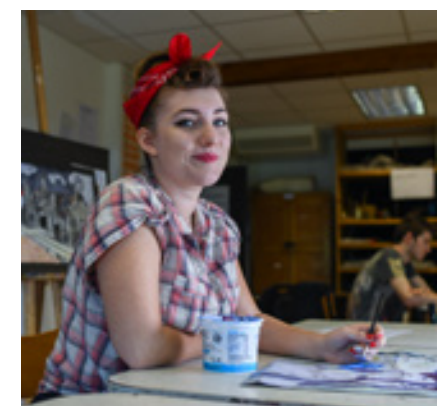
Our Learning Resource Centre is a bright and modern space to learn, with independent study areas. Our librarians are on hand to help with all your educational needs.

## Motor vehicle unit

At nearby Calmore Road Industrial Estate, our fully-functional motor vehicle unit creates a real working environment for our students.

## Refectory

Our spacious refectory serves a selection of meals, snacks and drinks.



## Learner services

At Totton College, we believe that the personalised and holistic support we offer our students is second to none. We are proud of the excellent learner support services that are available to all learners throughout their time with us.

We want to make sure that our students' experience of learning is the best it can be at every step of the way, so we provide everything from progression coaching to counselling, careers guidance, learning support, help with a disability, dyslexia or anxiety, as well as guidance on bursaries and funding issues.



### Information Centre

Our dedicated Information Centre is often the first point of contact for students with a question or issue. Our experienced and friendly team will do their very best to help either directly or by signposting you to appropriate college staff or external services.

### Student welfare

The welfare team is available to offer confidential help and advice to any students wanting to talk over anything from relationship or health issues to finance or housing problems. Some students are referred by a teacher if there is a specific need, while others just drop in for a chat.

### Student finance

Some learners may be able to apply for financial assistance to help support their learning. If you think you may be eligible or are struggling with your finances, we can help you to apply for bursaries, free childcare, free meals or assistance with travel costs or essential books or course equipment.

### Learning support

Whether you need help with reading, writing or numeracy skills, have dyslexia or simply want some support with gaining better research skills or exam techniques, our learning support team can help. The friendly and approachable team can give you expert support, advice and tuition to ensure you maximise your potential at college.

### Employability Hub

Students have a wealth of opportunities once they have completed their course, with options ranging from staying at Totton College or doing a foundation degree or Access course, to applying to university, traineeships or apprenticeships or moving on to employment. During your time at Totton College, regular progression coaching sessions will allow you to talk about your goals and seek guidance on how you can achieve them.

Students can access iLearn for information on careers advice, apprenticeships, university open days, voluntary work, work experience and gap years. In addition, our experienced careers advisers run regular events and provide tailored support ensuring every student has explored the most appropriate options to realise their career aspirations. Advisors are on hand to discuss career plans and offer guidance on CVs, applications and interview techniques.

### Bursaries

When you enrol onto one of our courses, you have the opportunity to apply for support from the Bursary Fund. A bursary provides financial support to enable you to stay in education and complete your course. The fund is only to be used for things associated with your course which may include travel to college, materials, books or kits. Please ask Reception for an application form.



### **Nacro Students' Union**

As part of the charity, Nacro, you will have the opportunity to join the national Nacro Students' Union, which offers support and advice to all Totton College students. Each year a team is elected by our student community to represent all students and organise social, fundraising and volunteering activities.

Getting involved with Student Union activities is a great addition to your CV or UCAS application, and is also really rewarding. You get the chance to make new friends, gain skills and – as it is affiliated with the National Union of Students – gain fantastic discounts in a huge range of shops and stores.

### **Health and fitness**

We offer excellent health and fitness facilities with friendly staff providing help and guidance whatever your requirements. Subject to induction, all students have access to the gym and swimming pool at Totton College's neighbouring Totton Health and Leisure Centre between 8:30am and 4pm, all year round. In addition, many students use the dedicated gym within the college's Sports Hub, which is open during term time only.

Sports team trials will also be organised by both Totton College and Chelsea FC Foundation, which runs its academy hub for Hampshire, Wiltshire and Dorset at the college.

### **Nacro Community Voice**

We are always keen to understand what helps our students to learn more effectively, and continually strive to further improve facilities and opportunities. We proactively encourage the college Community Voice by carrying out short surveys on different aspects of college life, promote debate and the sharing of ideas in the classroom, and invite students to take part in the college's Faculty Council or one of our student workshops.

### **Chaplaincy**

The college is pleased to welcome students of all faiths as well as those without religious beliefs. We have a chaplain, the Reverend Sally Marchant, from St Anne's Church, Calmore, who drops into college on a regular basis to talk to students and answer any questions they may have. Reverend Sally has links to a wide variety of faith groups and, alongside our student welfare officers, is always happy to put you in touch with local representatives from any religion.



## **Information for parents and guardians**

Leaving school to progress into further education is a big step for a young person. In Year 11 your child will need to make important decisions about their future education and career aspirations. It is recommended that you get information, advice and guidance early so that your child can make the right choices.

We know that as a parent or guardian, your child's education is of the utmost importance, so we do everything we can to make sure that your link with the college is as strong as possible. We have a number of ways for you to keep in touch with us including regular progress reports, parents' evenings and access to your child's Progression Coach.

At Totton College we want every student to have a positive and valuable experience with us. We provide a safe and inspiring environment for students to study their chosen subject with excellent opportunities for progression.

If you have any questions or concerns, please feel free to contact us:

Call **023 8087 4874**

Email **info@totton.ac.uk**



# Apprenticeships

Totton College has an established and successful apprenticeship programme covering intermediate, advanced and higher apprenticeships. Since the introduction of the Government's apprenticeship levy, this type of education is becoming an increasingly popular alternative to full-time college, with many 16–18 year olds gaining invaluable education and skills while earning an income.

## How much will I get paid?

The minimum wage for apprentices is set by the government. Employers will often pay more than the minimum and if you are over 19, in the second year of your apprenticeship you will be paid at least the national minimum wage for your age.

We offer apprenticeships in a growing number of career areas including:

Beauty therapy	LEVEL 2	LEVEL 3		
Business administration	LEVEL 2	LEVEL 3	LEVEL 4	
Customer service	LEVEL 2	LEVEL 3		
Digital marketing	LEVEL 2	LEVEL 3		
Hairdressing	LEVEL 2	LEVEL 3		
Health and social care	LEVEL 2	LEVEL 3		
IT, software, web & telecoms	LEVEL 2	LEVEL 3		
Logistics		LEVEL 3		
Management		LEVEL 3		
Marketing				LEVEL 5
Motor vehicle maintenance	LEVEL 2	LEVEL 3		
Team leading	LEVEL 2	LEVEL 3		
Warehousing	LEVEL 2			

## What is an apprenticeship?

An apprenticeship is a job that allows you to earn money as well as learn new skills, gaining a nationally recognised qualification in your chosen sector. Through an apprenticeship, you will also learn about professional workplace conduct and develop working relationships with colleagues.

Over the next two years, new government-led professional apprenticeship standards are gradually being introduced. With a dedicated and pro-active apprenticeship team, Totton College works closely with local employers, and is already providing these new standards which ensure that training is industry-specific and best prepares apprenticeships for the realities of the working world.

## How long is the apprenticeship for?

The minimum length of any apprenticeship is 12 months and one day. Some apprenticeships at Totton College are 18-24 months depending on the sector and any previous knowledge or experience you may have. In some subject areas this ties in with the academic year, starting in September, but in most cases you can start at any point throughout the year.

## What will I do?

An apprenticeship is designed to mirror full-time employment as much as possible. Therefore, you can expect to be treated in the same way as all other employees, including sick pay and paid annual leave.

Alongside your work, you will be required to complete a portfolio showing your knowledge and competence of your chosen sector – this will be with the support of your assessor and employer.

You will attend monthly workshops at college to cover topics which are compulsory to all apprentices. This will give you the opportunity to meet other apprentices and assessors in a different environment to exchange ideas and discuss your qualification and job role.

## How much time will I spend in college?

The level of college attendance will vary depending on whether you enrol on a work-based or day release apprenticeship:

- Day release apprenticeships require you to attend college at least once a week.
- Work-based apprenticeships are delivered within the workplace with your assessor visiting you on a monthly basis to set targets, assignments and assess your progress. You also attend a monthly one-day workshop at the college.

In addition, you may be required to attend college for English and maths lessons dependent on prior attainment.

### How do I find an employer?

The college has strong links with local businesses and organisations, and we strive to provide diverse apprenticeship opportunities, all of which can be accessed via the government's national 'find an apprenticeship' website - [gov.uk/apply-apprenticeship](https://gov.uk/apply-apprenticeship). This website will prompt you to complete a profile prior to making applications to the apprenticeships of your choice.

Alternatively, if you would like to work for a specific employer, you should spend some time working on your CV and make contact with them to enquire whether they have any vacancies or work experience opportunities. Taking this proactive route often gives employers a positive first impression.

Our apprenticeship team can provide support to learners who are looking for an employer, from guiding them to find and research potential employers to ensuring CVs are accurate and well-written.

### Will I still be able to go to university?

You have many options after completing a Level 3 apprenticeship. The qualification is accepted by many universities, allowing learners to progress on to study for a degree. Alternatively, you may choose to move on to a higher apprenticeship, some of which are equivalent to a degree, or seek employment.

### Entry requirements

Entry requirements vary depending on the qualification you will be working towards. Some programmes don't have minimum entry criteria, although most require a minimum of five GCSEs at grade 4 (or grade C) or above. The college will support you with continuing to study.

**An apprenticeship gives you hands-on experience and allows you to earn money while studying to gain an industry-recognised qualification.**

For more information about apprenticeships contact:

Call **0300 123 3385**

Email **[apprenticeships@totton.ac.uk](mailto:apprenticeships@totton.ac.uk)**





# Your study programme

Our aim is to enable you to maximise your potential both at college and in your future. This means making sure you are studying the right type of qualification for the career you want to follow.



## Professional and technical qualifications

Our technical courses, including BTEC, Cambridge Technical and City & Guilds, allow you to combine academic study with practical learning and training. These courses provide you with a wide range of employability skills such as presenting, teamwork, communication and problem solving which are gained through work placements and classroom participation.

Technical courses are a great choice if you already have a specific career in mind as the skills you develop can relate directly to your chosen industry. They also provide you with a recognised national professional qualification, which will prepare you for further study at university level or within the workplace.

## What to expect

All full-time learners undertake a study programme which consists of 540 hours of study per year and is tailored to suit you. In most cases, study programmes are run over three or four days a week, 9am-4.30pm. You may have one day a week free to use as a study day, allowing time to complete wider research and assignments, or alternatively as a work placement day, to attend work experience on a regular basis.

Your study programme will include:

## Technical qualification

Entry Level or a Level 1, 2 or 3 qualification such as BTEC Subsidiary Diploma, 90 Credit Diploma, Diploma, Extended Diploma, Cambridge Technical, City & Guilds or other professional qualification that provides the main focus of your study programme.

## Progression coaching

All learners have access to one-to-one progression coaching sessions, where you will discuss your future and the steps needed to achieve your goals, on a weekly basis. This could cover discussing a career pathway, completing educational courses throughout college and university or looking at gaining skills for interviews and employment opportunities.

## English and maths

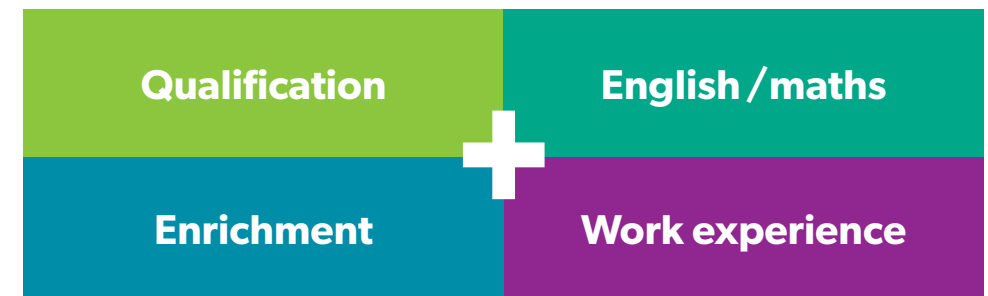
If you are aged 16-18 at the start of your programme and haven't achieved a GCSE grade 4 (grade C) or above in English and maths then these classes will be a key part of your study programme. Our teachers will work with you to achieve better grades, which will help you progress to the next stage of your education or your chosen career.

## Work experience

At Totton College, we know how important it is to combine practical work placements and work-focused activities with classroom-based study, so there will be plenty of opportunity for you to develop your work experience while you are studying with us. Some study programmes dedicate a particular day each week to work-focused activities while others embed block placements into the academic year. Our specialist work experience coordinators will work with you to find a placement to complement your study programme. Alternatively you are able to source your own.

## Enrichment activities

You will also have the opportunity to take part in additional activities such as directed study time, e-learning, trips, events, additional qualifications and support with job and further study applications.

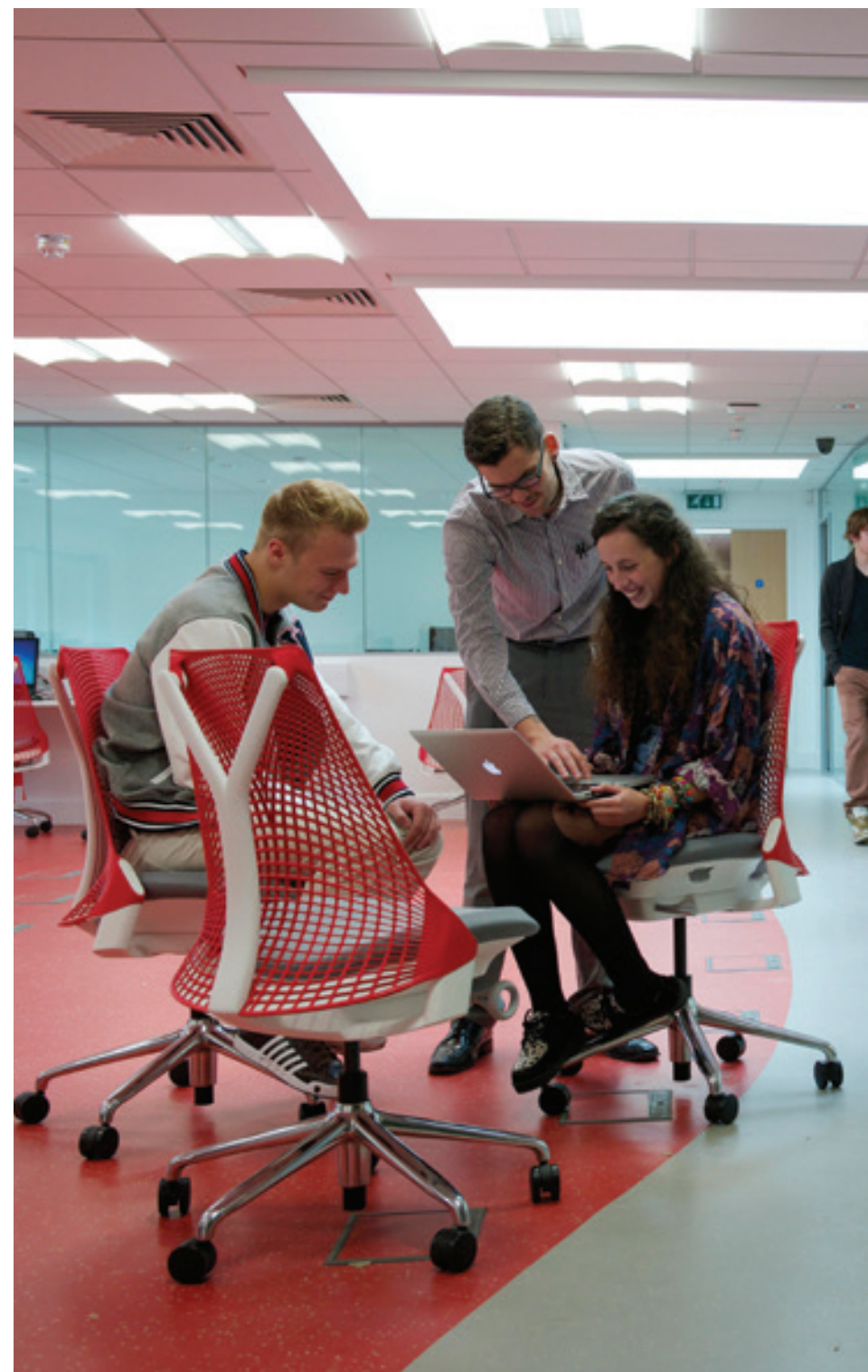


## Choose your own path

The following pages give information about all of the courses you can take at Totton College. We offer courses to suit all levels and qualifications, so there's something for everyone.

Based on your achieved or predicted GCSE grades, you can use the table below to identify the right level for you. You can also choose from any level below yours. For example, if you fall into Level 3, you can still choose a course from Level 2.

Level	Types of qualification	Qualifications/grades needed	Overview
<b>3</b>	City & Guilds 3, NVQ 3, Cambridge Technical 3, BTEC National Diploma	At least five GCSE passes at grade 4 (grade C) or above. Experience or evidence of a passion for the subject would also be beneficial.	For people wanting to progress on to university, an apprenticeship or employment.
<b>2</b>	GCSEs, City & Guilds 2, NVQ 2, Cambridge Technical 2, BTEC First Diploma	GCSE grades 3 and 2.	For those wanting to progress to a Level 3 qualification, apprenticeship or employment.
<b>1</b>	GCSEs (grade 3-1), City & Guilds 1, NVQ 1, BTEC Introductory Diploma	GCSE grade 1 or no qualifications or previous experience required.	For people wanting to progress to a Level 2 qualification or need to improve English, maths or IT.
<b>E ENTRY</b>	GCSEs (grade 3-1), City & Guilds 1, NVQ 1, BTEC Introductory Diploma	No qualifications or previous experience required.	Involves building basic skills, knowledge and confidence.





# Chelsea FC Foundation Academy

In association with Chelsea Football Club Foundation, Totton College runs a Football Academy for 16–19 year olds with a good level of footballing ability and a passion for the game. The academy offers enthusiastic footballers with aspirations of playing at a higher level the chance to receive regular coaching to a professional standard, alongside their full-time academic study programme.



## Totton College Football Academy

Chelsea FC Foundation's Regional Development Coaches work with local schools, developing feeder academies where 14–16 year old pupils train on a weekly basis, with the prospect of a trial for the Totton College Football Academy upon leaving school.

To join the academy, students must be enrolled on a full time academic Level 1, 2 or 3 study programme at Totton College.

Three days a week, students will attend two hours of coaching from UEFA B-licenced Chelsea Foundation coaches. Wednesday is match day, with students playing in the Hampshire FA's Colleges League.

Throughout the academic year, students will also have opportunities to visit Chelsea FC's Cobham training ground and attend workshops with guest speakers from the club. They will also have the opportunity to visit Stamford Bridge.



## Entry criteria

Students will be offered places in the academy based on their footballing ability following an open invitation trial.

Trials will be held during June and July for the September 2019 entry. However, students who are not initially successful may attend future periodic trials throughout the year.

## Will I gain any qualifications?

You will gain a real and practical insight with a specialist and tailored experience. In addition, you have the option to take the FA Level 1 Certificate in Coaching Football Courses, which allows the potential for work placement opportunities within the Foundation.

## Will it cost anything?

Totton College will provide your match kit, but you will need to purchase a Chelsea FC training kit at the cost of around £100. You may be able to claim this via a bursary at Totton College. See page 9 for further information.

**“We’re keen to support those with a passion for the game to hone their skills on the pitch, alongside continuing with their academic studies.”**

John Dutton, Regional Development Coach  
Chelsea FC Foundation

## For more information:

For details about the Football Academy, trial dates and an application form please contact John Dutton or Totton College:

Email [john.dutton@chelseafc.com](mailto:john.dutton@chelseafc.com) or [info@totton.ac.uk](mailto:info@totton.ac.uk)





# VOCATIONAL COURSES

All of our full-time courses follow a study programme, which integrates your main area of study with a work experience placement, as well as English and maths where applicable. You can develop your creative flair and gain the skills you need to move on to university or the world of work, or get experience in real life work environments using industry-standard software and equipment. Many of our vocational courses feature trips, visits and collaborations with outside organisations, workshops with guests and visits to industry exhibitions.

The majority of our learners move on to employment within their chosen sector, while some opt to move on to higher education before embarking on their career. Whichever course you choose, we'll make sure you're ready for the next step and help you to build up the confidence and self-belief you need to go on and achieve your dream.

## FACILITIES

- Dedicated media suite
- TV studio
- Computer system support facility
- Dance studio
- Music recording studio
- Music practice studio
- Industry standard software
- Extensively equipped art and design facilities

## COURSE INFORMATION KEY

- ✓ Entry **requirements**
- 📖 What will I **study**?
- ➔ What can I do **next**?
- ★★★ **Assessment** method
- 🕒 Course **duration**
- ✚ Course **extras**

Levels available:

LEVEL 3

LEVEL 2

LEVEL 1

# Art and design

If you like telling your story through art, why not develop your artistic side and improve your employment skills at the same time? Whether you're interested in drawing, painting, printmaking, photography or sculpture, we'll help you research and develop your talent and move on to university or the world of work.

**INDUSTRY LINKS:** Roche Court · Hillier Gardens · Forestry Commission  
English Heritage · Solent University · Chichester University

## Art and Design LEVEL 1

Ideal if you have an interest in craft, this course will give you a broad understanding of art and design. You will also develop vocational and study skills which will support your progression within art and more generally.



There are no specific requirements for this qualification. The course is designed for all students who are interested in art and design.



You will explore craft skills, develop design ideas for craft, create ideas in relation to a brief and produce and review final craft work.



You can go on to pursue a higher level programme of study in art and design.



You will be assessed through coursework assignments.



**FULL-TIME** 1 YEAR

The atmosphere at Totton College is non-judgemental and gives you the freedom to be different. The support from the teachers and staff has really boosted my confidence. When I've finished the course I'd like to be a tattoo artist. I have contacts for work experience so I can do an apprenticeship and I've already sold my own tattoo designs. I would really encourage people to come here – it's so friendly and I feel I can talk to anyone.



Chloe Louise Shuttler  
Testwood Sports College  
**Art and Design Level 2**

## Art and Design **LEVEL 2**

During this course you will develop your skills in art and work in a range of 2D and 3D media. As well as developing your own presentation techniques, you will explore the art and design work of others.

- ✓ A keen interest in art and design is essential. It would be desirable to have gained some GCSEs at grade 3 (grade D or above), or a Merit or Distinction at BTEC Level 1 or equivalent level.
- 📖 You will explore the work of artists and designers, produce art or design work for sale and explore self image, photography, 3D and fine art.
- ➔ You can progress into employment, further training or higher level qualifications. This course does not lead directly to an art and design career – further study at Level 3 is required.
- ★★★ You will be assessed through coursework assignments.
- 🕒 **FULL-TIME** 1 YEAR

## Art and Design Diploma **LEVEL 3**

During the course you will have the opportunity to work in a range of new and exciting 2D and 3D media. As well as developing your own use of visual language and presentation techniques, you will explore the art and design work of others.

- ✓ A good standard of art and design evidenced through a portfolio. At least four GCSEs at grade 4 (grade C) or above including an art-based subject, or a BTEC Art and Design at Merit.
- 📖 You will study a number of art and design units, including illustration, animation, carving, fashion design, sculpture, photography, painting, drawing and print making.
- ➔ You can further your studies on the Level 3/4 Foundation Diploma or you can apply to higher education through the UCAS system. This could lead to a career in graphic design, illustration, fashion/textiles, animation, photography, 3D design, special effects, event organising or gallery management.
- ★★★ You will be assessed through coursework assignments.
- 🕒 **FULL-TIME** 1 YEAR - Introductory Diploma  
**FULL-TIME** 2 YEARS - Extended Diploma



## Beauty therapy

If you like the idea of working in a salon or spa, our beauty courses are just what you need. As part of small, practical groups, you'll be working in our state of the art Opus Salon, which is located on-site at the college. With the latest equipment and a professional atmosphere, you'll be able to learn skills and techniques that will help you gain a job in the beauty industry.

**INDUSTRY LINKS:** SenSpa



I started the course at Totton while I was still at school. The facilities are great and the teachers adapt things to help you learn. Everybody gets on really well and it's a nice environment to be in. I felt really supported by the staff and built relationships. The course lets you interact with the public and get an insight into the working world. I gained a lot of customer services skills at the college. You also learn everything about health and safety, too, which you're expected to know before you go into the industry.

After finishing the course, I went on to university and then set up my own business and became a freelance make-up artist. I work with the NHS doing special effects make-up for their trauma training days. I am currently self-employed as a beauty therapist and I have recently started working part-time at LEGOLAND Windsor as a wig technician.

If I hadn't gone to Totton College, I wouldn't be as successful as I am now.

## Beauty Therapy and/or Hairdressing LEVEL 1

An ideal introduction for students with no relevant qualifications, but who want to work towards developing a career in either beauty therapy or hairdressing. Much learning will take place in practical salon workshops, and you will work in a realistic working environment eventually treating clients to a commercial standard.



No formal qualifications are essential, but a good standard of English and a genuine interest in hair and beauty would be beneficial.



This introduction to the hair and beauty sector includes a broad range of treatments including skin care, make-up, manicure, pedicure, salon reception duties, hair styling, plaiting, twisting and dressing, temporary and semi-permanent colouring. In addition you will learn about health and safety, anatomy and physiology of the hair and skin as well as the science behind each technical service.



You can progress on to Level 2 qualification such as a Diploma in Beauty Therapy, Diploma in Hairdressing or a holistic therapies course.



You will be assessed through written assignments as well as practical assessment.



**FULL TIME** 1 YEAR





## Beauty Therapy **LEVEL 2**

This course will provide you with the essential technical and practical skills and knowledge that you need to seek employment or further training within the beauty industry.



Four GCSEs at grade 4 (grade C), including English and maths.



You will study hair removal, facial and skin analysis treatments, manicure and pedicure services, light cured gel polish, lash and brow treatments, application of make-up, tanning treatments, anatomy and physiology, and principles of practice.



This qualification will allow you to progress into employment or on to a Level 3 Technical Diploma. Alternatively, you could move on to employment in a beauty salon, spa, health club or hotel.



You will be assessed through one externally set assignment and one externally set exam.



**FULL-TIME** 1 YEAR

## Beauty and Spa Therapy **LEVEL 3**

This course will provide you with the essential technical and practical skills and knowledge that you need to seek employment or further training within the beauty and spa therapy industry.



Level 2 Diploma in Beauty Therapy or equivalent industry experience.



You'll study units including body massage, facial and body electrotherapy, anatomy and physiology, and dry spa treatments. Optional areas include Indian head massage and hot stone therapy treatments.



You can progress into employment, higher education or on to a Level 3 Technical Diploma qualification or to university. This qualification could lead to a job as a senior beauty/spa therapist working in a salon, spa or hotel salon.



You will be assessed through one externally set assignment and one externally set exam.



**FULL-TIME** 1 YEAR

## Business and administration

If you enjoy business and administration and would like to turn it into a job, our courses will help you achieve that. You'll gain an understanding of business and ICT and develop skills that can help you get your career off the ground. You'll learn the personal skills and attributes essential for successful performance in the business world.



## Business Administration LEVEL 2

If you would like to get a head start on a career in business and administration, this qualification will allow you to build your skills while gaining hands-on experience. Level 2 will suit you if you are working in or want to work in a business support role.

- ✓ An interest in business administration is essential. You will need a range of GCSE passes, with some at grade 3 (grade D) or above, particularly in English and maths.
- 📖 You will study a range of units including providing administrative services and principles of managing information and producing documents.
- ➔ You can progress to Level 3, an apprenticeship or go into the business industry.
- ★★★ You will be assessed through work-related assignments and practical tasks.
- 🕒 **FULL-TIME** 1 YEAR - Diploma

## Business Administration LEVEL 3

This course offers work-related qualifications which open the door to higher education and a career. You will build on your teamwork, creative thinking and presentation skills and develop independent research and study skills.

- ✓ GCSE maths and English at grade 4 (grade C) or above and an IT qualification such as GCSE ICT at grade 4 (grade C) or above.
- 📖 You will study principles of personal responsibilities and how to develop and evaluate own performance at work, working with and supervising others and managing information and producing documents in a business environment.
- ➔ You can progress to higher education, an advanced apprenticeship or go into the business industry.
- ★★★ You will be assessed through work-related assignments and practical tasks.
- 🕒 **FULL-TIME** 1 YEAR - Diploma

## Childcare

If you're thinking about getting a job in a nursery or a play centre, then our childcare courses are a great place to start. Our childcare courses take you through the basics of working with children and show you how to make learning fun. You'll get plenty of practical experience to give you confidence when you start work or progress on to university.

**INDUSTRY LINKS:** Pinecones Nursery





## Children's Care, Learning and Development **LEVEL 2**

This course is a great way to start your future in childcare, education or related industries. You will study a range of topics and take part in practical placements throughout the course.

✓ At least three GCSEs at grade 3 (grade D) or above, as well as maths and English, and a good report from a work experience placement with children. A Disclosing and Barring Service (DBS) check is required.

📖 You will study a wide range of topics including child development, keeping children safe, communication skills, professional development and supporting children's play and learning.

➔ You can progress to the Level 3 Childcare course or a career as a nursery assistant, classroom assistant or pre-school assistant.

★★★ You will be assessed through direct observation within the workplace, a portfolio of evidence, and written assignments or a task.

🕒 **FULL TIME** 1 YEAR - Diploma



## Children's Play, Learning and Development **LEVEL 3**

This diploma qualification prepares you to work as an early years practitioner with children in nurseries, crèches, reception classes or pre-schools and can be used as a step to university.

✓ A minimum of five GCSEs at grade 4 (grade C) and above, including English and maths. A placement of at least five days in a childcare setting, with a positive report of progress, is desirable. A Disclosing and Barring Service (DBS) check is required.

📖 You will study a range of topics including child development, children's physical development and care, health and safety, keeping children safe, play and learning, and reflective practice.

➔ You can work with children in a range of settings such as nurseries and reception classes, or as a home-based childcare worker. You can also progress to university or teacher training.

★★★ You will be assessed through exams, placements and assignment writing.

🕒 **1 YEAR** - Foundation Diploma  
**2 YEARS** - Extended Diploma





## Creative media

If you enjoy working in creative communications, you can find a course here for you. You will learn a wide range of media skills, including filming, scriptwriting, animation, radio and print-based media.

**INDUSTRY LINKS:** Brentford Town FC · English Heritage · Sweet Solent University



Adam Thomas  
Hounsdown School  
**Video Games Development Level 3**

I've always enjoyed practical subjects so knew that a vocational course was best for me. Once I saw the quality of the computing kit at a Totton College open day I decided this was where I wanted to come. Everyone is really friendly and the teachers are very open and helpful. You get the freedom to develop and do the things you want to do, and get involved in some great trips. Last year we went to the EGX Eurogames convention in Birmingham.

I want to be an artist or modeller, designing characters and video game worlds, so am looking at both apprenticeship opportunities and university options for next year.

## Creative Digital Media **LEVEL 1** **LEVEL 2**\*

This course will give you a broad knowledge of the creative digital media industry. It is packed with practical applications and you'll develop skills in TV, film, animation, video games development and publishing design.

- ✓ An interest in creative digital media, as well as making your own material. You will need a range of GCSE passes, with some at grade 3 (grade D) or above, particularly in English and maths.
- 📖 You will study units covering digital media sectors and audiences, media in context, and planning and pitching a digital media product. You can study specialist units including filming and editing movie images.
- ➔ Most students progress on to Level 3 Creative Media Production or Level 3 Video Games Development.
- ★★★ You will be assessed through a range of methods, plus two exams.
- 🕒 **FULL-TIME 1 YEAR**

\*This is a Level 2 course but there is an option for Level 1 units to be taken if necessary. The Totton College team will help you to choose the right level for you.





## Creative Media Production Diploma **LEVEL 3**

You'll be immersed in film and TV during this course. The curriculum is packed with industry skills and practical application and gives a great overview of the creative media industry.

- ✓ A minimum of five GCSEs at grade 4 (grade C), including English, or a Merit or Distinction in Creative Digital Media. An interest in media and film production is essential.
- 📖 You'll study pre-production techniques, film and video editing, working to a brief, set designing and script development.
- ➔ Most students progress to university or industry to specialise in their chosen area. You can go on to a range of careers within the creative media sector.
- ★★★ You will be assessed through a range of creative methods.
- 🕒 **FULL-TIME** 1 YEAR - Subsidiary Diploma  
**FULL-TIME** 2 YEARS - Extended Diploma

## Video Games Development Diploma **LEVEL 3**

This challenging course is ideal for you if you're passionate about video games and want to gain the skills to be a part of this multi-million pound industry.

- ✓ Minimum grade 4 (grade C) in five GCSEs, including English and maths. A passion for video games and a desire to learn new skills is needed.
- 📖 You will study many areas including 3D modelling, digital graphics, computer game engines, concept art and project management.
- ➔ Most students progress to university where they specialise in a video games discipline. The course will also give you the skills to make your own indie video games and the confidence to seek employment in this tough business.
- ★★★ You will be assessed through a range of creative methods.
- 🕒 **FULL-TIME** 1 YEAR - Subsidiary Diploma  
**FULL-TIME** 2 YEARS - Extended Diploma



## Hairdressing

If you like the idea of working in a hairdressers or spa, our hairdressing courses are just what you need. As part of small, practical groups, you'll be working in our state of the art Opus Salon, which is located on-site at the college. With the latest equipment and a professional atmosphere, you'll be able to learn skills and techniques that will help you gain a job in the hair industry.

**INDUSTRY LINKS:** Guy Kremer Hairdressing · L'Oreal · Salon Supplies



### Cutting and Styling Services LEVEL 2

This course will provide you with a range of essential technical practical skills and knowledge which will help you to seek further training or employment as a junior stylist.

✓ GCSE grade 3 (grade D) in English and maths.

📖 On this course you will learn principles of hairdressing and barbering services, as well as how to shampoo, condition and treat the hair and scalp, style, set and dress hair, cut hair using basic techniques and plait and twist hair.

➔ You can progress into employment or on to another certificate or diploma at Level 2 or 3. You will be qualified to work in a hairdressing salon or blow dry bar, a hotel or on a cruise ship.

★★★ You will be assessed through a theory exam and a practical assignment, as well as informal assessments throughout the course.

🕒 **FULL-TIME** 1 YEAR

### Hair Colouring Services LEVEL 2

This course will provide you with the essential technical practical skills and knowledge which will help you to seek further training or employment as a junior colourist.

✓ GCSE grade 3 (grade D) in English and maths.

📖 You will study principles of hairdressing and barbering services, colouring and lightening, styling and finishing services, perming and neutralising/relaxing hair, shampooing, colouring and lightening, and styling and finishing services.

➔ You can progress into employment or on to a Level 2 or 3 Technical Diploma. This qualification could also lead to a job as a junior colourist in a hair salon, hotel or on a cruise ship.

★★★ You will be assessed through practical assessment and an exam, as well as informal assessment throughout the course.

🕒 **FULL-TIME** 1 YEAR

### Technical Certificate in Hairdressing LEVEL 2

This course will provide you with the essential practical skills and knowledge which will equip you to seek either further training or employment as a junior stylist/colourist providing cutting, styling and colouring services within the hairdressing industry.

✓ GCSE grade 4 (grade C) in English and maths.

📖 On this course you will learn the skills needed to carry out services such as shampooing, conditioning, styling, finishing and setting hair, as well as cutting, colouring, lightening and plaiting and twisting the hair.

➔ You can progress into employment or on to a Level 3 course. You will be qualified to work in a hairdressing salon or blow dry bar, a hotel or on a cruise ship.

★★★ You will be assessed through a theory exam and a practical assignment, as well as informal assessments throughout the course.

🕒 **FULL-TIME** 1 YEAR



## Hairdressing Advanced Technical Diploma **LEVEL 3**

This course will provide you with the specialist practical skills and technical knowledge you need to seek employment or further training within the hairdressing industry.



GCSE English and maths at grade 4 (grade C), as well as a Level 2 qualification in hairdressing or equivalent industry experience.



You will learn how to cut men's and women's hair, and how to creatively colour, lighten, style and dress hair. You'll study hairdressing consultation and hair colour correction. There is a mandatory employer involvement requirement for this qualification.



You could progress into employment or on to a Level 4 qualification. You could also get a job as a hairdresser working in a hair salon, spa, hotel or on a cruise ship.



You will be assessed through a theory exam and practical assessment, as well as informal assessment throughout the course.



**FULL-TIME** 1 YEAR



## Health and social care

If you're thinking about getting a job that involves caring for people, our health and social care courses are a great place to start. You can specialise in areas like caring for disabled people, social care or housing issues. You'll get plenty of practical experience to give you confidence when you start work or progress on to university.

### Health and Social Care **LEVEL 1** **LEVEL 2**

This course is ideal if you are thinking of a job in health or social care. It is a great introduction to this rewarding, ever-changing and demanding industry.



Four GCSEs grade 3 (grade D) or a Level 1 qualification at Merit or higher. You'll need to apply for a Disclosing and Barring Service (DBS) check before starting the course or during enrolment.



You will study a range of units including human lifespan development, effective communication, nutrition, equality and diversity, healthy living and creative and therapeutic activities.



You can progress to a Level 3 qualification such as BTEC Level 3 Diploma in Health and Social Care or a junior level position as a care assistant, support worker or nursery assistant.



You will be assessed through written and practical assignments such as essays, presentations and discussions, and two examinations.



**FULL-TIME** 1 YEAR

I did well in my GCSEs and originally thought I'd do A Levels in psychology, biology and chemistry, but after the first year I realised that it wasn't for me.

I moved to Totton College where the smaller class sizes and nicer teachers means I'm getting much better support both with my course and university and careers advice. They've really helped me to re-focus, and have brought out my confidence. I've gained relevant, hands-on work experience in the area of cardiac physiology, which really interests me. I plan on going to the University of Southampton to do a degree in Healthcare Science.

## Health and Social Care **LEVEL 3**

This course will give you a good general grounding in the theory and practice of working with people in a range of health and care settings. Work experience will also give you hands-on experience.

- ✓ A minimum of four GCSEs including English and maths grade 4 (grade C).
- 📖 You will learn about communication, equality, diversity and human rights, anatomy, physiology, sociology, psychology and working with older people and those with challenging behaviour.
- ➔ You can progress to a foundation or university degree or a higher apprenticeship in areas such as nursing, paramedic science, midwifery, social work, forensic science, health studies and primary education.
- ★★★ You will be assessed mostly through assignments and a small number of exams. Practical skills will be assessed through observation.
- 🕒 **1 YEAR** - Subsidiary Diploma  
**2 YEARS** - Extended Diploma

## Motor vehicle maintenance

A motor vehicle course will give you the skills that most garages are looking for and is an ideal stepping stone into a job as a mechanic. Delivered in our fully-equipped motor vehicle service unit, we'll take you through the basics of vehicle maintenance, help you improve your knowledge of components and part fitting, and give you plenty of hands-on work experience.



## Transport Maintenance **LEVEL 1**

This course offers a broad introduction to the motor trade with the focus firmly on light vehicle practical tasks.

- ✓ You should have a keen interest in motor vehicles and a hands-on approach to learning.
- 📖 You will cover health and safety practices, foundation skills, personal social development and light vehicle mechanics.
- ➔ You can progress on to a Level 2 motor vehicle course either full-time or as part of an apprenticeship framework. You could also seek employment in the motor trade, at a junior level or as a tyre and exhaust fitter.
- ★★★ You will be assessed through a combination of practical and theory tests.
- 🕒 **FULL-TIME 1 YEAR**



## Light Vehicle Maintenance Diploma **LEVEL 2**

This qualification is ideal for those who are looking to be employed in the motor vehicle repair industry. It also offers an ideal step to the Vocational Competence Qualification.

✓ GCSE English and maths at grade 4 (grade C), plus two others at grade 3 (grade D) or above.

📖 You will study health and safety, principles and disciplines of working in the motor vehicle industry and workshop skills in engines, chassis, transmissions and electricals.

➔ You can progress on to a Level 3 qualification either full-time or as part of the apprenticeship framework. You could also move on to employment in the motor industry repair sector.

★★★ You will be assessed through practical tasks and online assessment.

🕒 **FULL-TIME** 1 YEAR

## Light Vehicle Maintenance Diploma **LEVEL 3**

This qualification offers an ideal introduction to vehicle diagnostics for those who are looking to be employed in the motor vehicle repair industry.

✓ A motor vehicle qualification at Level 2, GCSE grade 4 (grade C) in English and maths, plus two other GCSEs at grade 3 (grade D) or above.

📖 You will study diagnostics of electrical/electronic systems, engine systems and chassis, and transmission systems. You will also learn about health and safety, customer care and agreeing customer needs.

➔ You can progress into employment in the motor industry repair sector or to study Advanced Motor Vehicle Diagnostics or any other motor vehicle related courses at degree level.

★★★ You will be assessed through practical tasks and online assessment.

🕒 **FULL-TIME** 1 YEAR

## Music

For people who would like a career in the music industry, our music courses aim to give you the practical skills and the confidence to make it a reality. You'll take part in workshops led by highly experienced teachers and get plenty of performance practise in renowned music venues.

**INDUSTRY LINKS:** Hanger Farm · Solent University · Talking Heads Wedgewood Rooms



## Music **LEVEL 2**

This course offers a great introduction into the music industry. Depending on your interests, you can focus on various areas including performance, composition, recording, live sound, sequencing and music business.

✓ At least four GCSEs at grade 3 (grade D). Performance students will need to sing or play an instrument to at least a beginner level.

📖 Units studied vary depending on individual interests but include rehearsing skills, performing skills, recording music and composing for TV and film.

➔ You can progress on to a Level 3 Extended Music Diploma – either in Music Performance or Music Technology – or progress to employment in a wide range of job roles across the music industry such as runner, roadie, stage crew, venue staff and music promoter.

★★★ All units are assessed via coursework and performance.

🕒 **FULL-TIME** 1 YEAR



## Music Performance Diploma **LEVEL 3**

This two year course is distinctly different to the Music Technology Diploma, but both are delivered alongside each other enabling students to support each other. Year one is all about building core skills and knowledge, while the second year is highly vocational.



At least five GCSEs at grade 4 (grade C) or above, or a Level 2 qualification, preferably in music or another creative sector subject. Students must be able to sing, or play an instrument, at least approaching an intermediate level.



In the first year you will study a range of units such as keyboard skills, composing, performing and aural perception. In the second year you will set up a function band, write material, record and release an EP and arrange and play events.



You can go to university or straight into working within the music industry as a session musician, event promoter, recording artist, an instrument tutor or working for a record label.



You will be assessed via coursework and performance.



**FULL-TIME** 1 YEAR - Subsidiary Diploma  
**FULL-TIME** 2 YEARS - Extended Diploma



Tomàs Miller  
The Henry Beaufort School  
**Music Performance and  
Technology Level 3**

Totton College isn't my nearest college, but I chose it because of the teacher who I just connected with. The music tech equipment is industry-standard, too.

I'm already involved in the music industry and perform using my stagename, T-Millzy. Most opportunities would have occurred over time but the course has given me the opportunity to do things sooner. Last year I did a rap/grime set as part of a label launch at The Talking Heads which was a mind-blowing and memorable experience. The BTEC Music Diploma I'm doing is fluid so I've been able to combine performance and music tech.

Next year I plan to do a studio course in London and then push myself as an artist, maybe also getting involved in hosting events and festivals.

## Music Technology Diploma **LEVEL 3**

While distinctly different from the Music Performance Diploma, the two Level 3 courses are delivered alongside each other to encourage learners to support each other. During the first year you will build core skills and knowledge, moving on to a highly vocational second year.



At least five GCSEs at grade 4 (grade C) or above, or a Level 2 qualification, preferably in music or another creative sector subject.



You will study a range of units including studio recording, creative synthesis, composing, remixing and commercial music production. In the second year you will work behind the scenes with the music performance students, producing their work prior to releasing an EP.



You can go to university or straight into working within the music industry as a music technician, record production assistant, event promoter or working for a record label.



You will be assessed via coursework and performance.



**FULL-TIME** 1 YEAR - Subsidiary Diploma  
**FULL-TIME** 2 YEARS - Extended Diploma



## Science

The science sector is one of the largest and most diverse in the UK, with jobs spanning sectors such as biomedical, pharmaceutical, food, forensic, dental, health, physical and chemical science. If you are interested in working in science or health-related jobs, these courses can help you get there. You'll learn in our fully-equipped labs from experienced teachers.



I've always wanted to do a lab-based job, and I'm so glad I did the Applied Science course at Totton as you can really get hands-on and practical to test the theory.

I loved my time at Totton College. The teachers are really helpful and my D\* result, which is equivalent to three top grade A Levels, helped me get my place at the University of Southampton where I'm now doing MSc degree in Biomedical Sciences.



Dan Rigler  
Testwood Sports College  
**Applied Science Extended  
Diploma Level 3**

## Laboratory Science Technical Diploma **LEVEL 2**

This course offers a great overview of laboratory science and will prepare you for the world of work. You will develop transferable workplace skills as well as undertaking work experience.



A science GCSE at grade 3 (grade D), as well as grade 4 (grade C) in English and maths.



You will study health and safety, assisting in laboratory activities, preparing and clearing down a laboratory, handling scientific data, and planning a scientific investigation.



You can progress on to a Level 3 qualification or a range of BTEC Level 2 qualifications in related areas. You could move on to a laboratory-based apprenticeship or employment.



You will be assessed through assignments and exams.



**FULL-TIME 1 YEAR**

## Applied Science Extended Diploma **LEVEL 3**

This course will give you the chance to study all three disciplines of science. It includes industry expert guest speakers, a variety of industrial visits and work experience.



Level 2 Science Technical Diploma qualification, or 5 GCSEs including Science at grade 4 (grade C) or above, as well as grade 3 (grade D) in both GCSE maths and English.



You will study a wide range of topics including principles and applications of science, practical scientific procedures and techniques, science investigation skills, laboratory techniques and contemporary issues in science.



You can progress to university or a higher level apprenticeship. You could get a job in food science, forensic science, geoscience, life sciences, marine biology or meteorology.



You will be assessed through written reports, practicals and presentations.



**1 YEAR** - Subsidiary Diploma  
**2 YEARS** - Extended Diploma

# Sport

If you've ever thought about being a fitness instructor, coach or personal trainer then one of our sport courses could be perfect for you. You'll learn all about the physical side of these jobs, like how the body works and how injuries happen. We'll also show you what it means to be your own boss, so you've got the confidence to start your own business or apply for a job. You'll be able to learn in our on-site gym.

**INDUSTRY LINKS:** Chelsea FC · Totton Health and Leisure



I always enjoyed sport and more practical things at school, and have played for Totton Rugby Club since I was 14 years old, so doing a vocational course in sport at the college was perfect for me.

I'm now really enjoying doing a Level 3 Sport BTEC. As well as getting involved in sport and gaining coaching skills, you learn about sports science and the anatomy. The teachers are friendly and go out of their way to help you. There is also a lot of flexibility so I can fit the course around my rugby club's training sessions. I've also been able to get involved in loads of enrichment trips and activities doing watersports, hiking and fundraising for charities, as well as extra qualifications covering coaching and stewarding. I'd like to go on to university and train as a teacher, and would ultimately like to run my own sports coaching business.

## Sport LEVEL 1

This course is the ideal introduction to the world of sport and leisure. You will gain all of the knowledge you need to move on to a Level 2 course or a career in the sport industry.

- ✓ Five GCSEs at grade 2 (grade E) or above.
- 📖 You will cover the basics of exercise and fitness, including physical fitness, human body systems, health and nutrition and the sport and leisure sector.
- ➔ You can progress to a sports apprenticeship, employment at a leisure centre or Sport Level 2.
- ★★★ You will be assessed through assignments, written tasks and practical tasks.
- 🕒 **FULL-TIME 1 YEAR**

## Sport LEVEL 2

This technical diploma covers many different aspects of sport. Work experience and free membership of the facilities at Totton Health & Leisure will help prepare you for a job in the sports industry.

- ✓ GCSEs at grade 3 (grade D) or above.
- 📖 You will study units covering anatomy, planning and leading, nutrition, injuries, fitness and practical sport.
- ➔ You can go straight into work as a leisure attendant, sports coach, teaching assistant or trainee fitness instructor. You could also progress to an apprenticeship or take the Level 2 Fitness and Exercise Instructing course or the Level 3 Sports course.
- ★★★ You will undertake written assignments and practical assessments.
- 🕒 **FULL-TIME 1 YEAR**



## Sport LEVEL 3

This course is ideal for those interested in a career in sport, coaching or fitness. Our professional teachers will ensure that you have all the training you need to progress to university or into work.



Four GCSEs at grade 4 (grade C) or above, including English, maths and science, and a genuine interest in the sports industry.



You will cover anatomy and physiology, professional development, fitness training and programming, sports leadership, sports psychology, event organisation and business.



You can progress to university to study a degree in sport studies, teaching, coaching or fitness. You could apply for an apprenticeship in sport or look for a job in the sports industry.



You will be assessed through written exams, case studies and written and practical assignments.



**1 YEAR** - Subsidiary Diploma  
**2 YEARS** - Extended Diploma



**ADDITIONAL CERTIFICATE** in Spectator Safety available



## Uniformed public services

If you like to be active and enjoy practical problem solving, you might enjoy public services. It can help you start a career in the armed forces, emergency services or prison services.

**INDUSTRY LINKS:** Hampshire Constabulary · British Army  
Hampshire and Isle of Wight Air Ambulance



Mark Husband  
**Uniformed Public Services**  
Level 3

After studying GCSEs and Functional Skills at Totton College, I moved on to an Extended Diploma in Uniformed Public Services. The college provided me with the confidence to follow my desired career and education pathway as I progressed on to university and then to a career in the Hampshire Special Police Constabulary.



## Military Preparation College **LEVEL 1** **LEVEL 2**

Totton College is part of the Military Preparation College (MPC) network. The MPC is a unique training college that helps 16–23 year olds develop their fitness, vocational qualifications, and employability skills to help prepare for employment, including rewarding careers in the British Armed Forces.

The MPC's unique active learning curriculum inspires students to achieve their personal best, with 50% of every day spent learning outdoors or taking part in physical training. The MPC curriculum has been designed to develop students' physical fitness, essential skills and self-confidence. The college operates a 'roll on, roll off' joining process with no set deadline by which to apply, allowing new recruits to join on a weekly basis.

For more information or to register your interest please visit: [mpct.co.uk](http://mpct.co.uk)

## Public Services (Uniformed) **LEVEL 3**

If you are thinking of a career in any type of uniformed public service, this is the course for you. Study and practical activities will develop your skills in leadership and personal fitness.

- ✓ Five GCSEs at grade 4 (grade C) or above, including English and maths, or at least Merit in a Level 2 Public Services course.
- 📖 You will cover government, policies and the public services, team leadership, citizenship and diversity, fitness, water-based and outdoor activities, custodial care services and employment opportunities.
- ➔ You can progress to a career in the police service, fire and rescue service, Army, Royal Navy, Royal Air Force or prison service, or to an apprenticeship or higher education.
- ★★★ You will be assessed through practical and written assignments and additional activities.
- 🕒 **1 YEAR** - Subsidiary Diploma  
**2 YEARS** - Extended Diploma
- ✚ **OPTIONAL CERTIFICATE** in Spectator Safety available



# FOUNDATION SKILLS FOR LIFE

The inclusive programmes within our Skills for Life faculty are delivered by our qualified and experienced team, which includes staff who specialise in disabilities and special educational needs. Together we aim to instil self-belief and confidence in our learners. The tutorial element is an integral part of the programme's philosophy and students are empowered to take responsibility for their own learning.

All learners' timetables are personalised to meet individual needs and all students work towards functional skills in English and maths.

Our general vocational and transitional pathway courses are outlined on the following pages. For information about our full range of our Foundation Skills for Life courses – from Pre-Entry to Level 3 – please call **023 8087 4874**.

## FACILITIES

- Full catering kitchens
- College media suite and TV studio
- College ICT suites
- College nurse
- Art rooms
- Access to sports facilities including swimming pool



## COURSE INFORMATION KEY

- ✓ Entry **requirements**
- 📖 What will I **study?**
- ➔ What can I do **next?**
- ★★★ **Assessment** method
- 🕒 Course **duration**
- ✚ Course **extras**

Additional levels available:

**ENTRY 3**

**ENTRY 2**

**ENTRY 1**

**PRE-ENTRY**

Please enquire for more information.



I settled into college quickly and enjoyed the chance it gave me to widen my circle of friends and boost my confidence. I took courses in Functional Skills and Work Skills Level 1 and then progressed on to Employability at Level 2. I went on to get a work experience placement and then permanent employment at Leith's Restaurant at the Beaulieu Motor Museum.



Becky Tennant  
New Forest Academy



## General vocational studies

The cross-curricular, general vocational courses run from our Skills for Life faculty, yet provide students with the opportunity to take part in activities and learning opportunities across the campus. The courses offer a flexible curriculum and aim to prepare students for higher level study, working life and employment.



### Vocational Studies LEVEL 1

This course will give you the opportunity to try several vocational areas as well as building on your core skills to help you progress on to the career of your choice.



Some success at GCSE grade 1 (grade G) or equivalent, with a minimum English and maths at Entry Level 3.



You can choose two vocational options and will also cover self-assessment, career progression, money management, employability skills, creative media, public services, hospitality and English and maths.



You can progress to a Level 2 course, employment or further training such as a traineeship, supported internship or apprenticeship.



You will be assessed through a portfolio.



**FULL-TIME** 1 YEAR

### Vocational Studies LEVEL 2 LEVEL 3

These courses will give you the opportunity to try several vocational areas as well as building on your core skills to help you progress on to the career of your choice.



Some success at GCSE grade 1 (grade G) or equivalent, with a minimum English and maths at Entry Level 3.



You can choose two vocational options and will also cover self-assessment, career progression, money management, employability skills, creative media, public services, hospitality and English and maths.



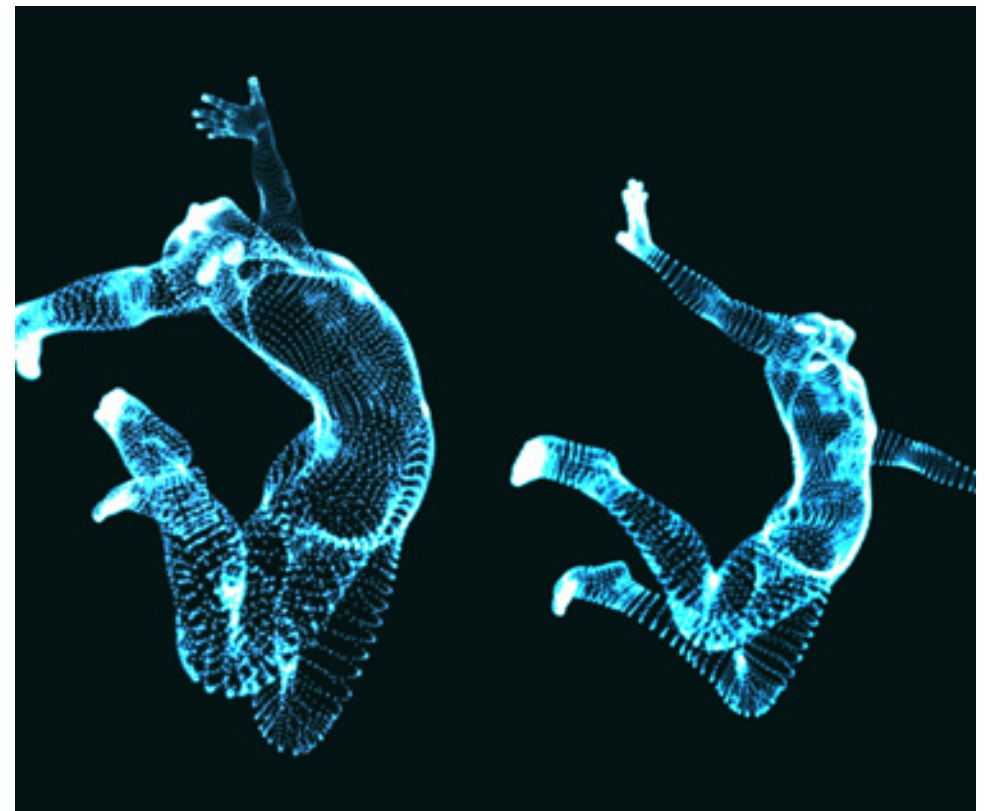
You can progress to a mainstream Level 2 or Level 3 course, employment or further training such as a traineeship, supported internship or apprenticeship.



You will be assessed through a portfolio.



**FULL-TIME** 1 YEAR



## Transitional pathways

Our transitional pathways course offers extra support to students who may find the prospect of starting college daunting. You can take things at your own pace and will be supported to continue studying with us if you decide you want to.



### Junctions ENTRY 3 LEVEL 1 LEVEL 2



Students on the Junctions course may have high-functioning Autism or Asperger's Syndrome and mental health needs such as anxiety, OCD or depressive illness. The course is designed to help you develop your confidence, social communication and life skills, and teach you to be as independent as possible, both in college and in the local community.



You will learn employability skills, teamwork, managing money, photography, art and design, sport, life skills, and maths, English and ICT.



We hope that you will stay on at the college and take other courses. You could also progress into paid employment, a supported internship, traineeship or apprenticeship.



Assessment will be flexible and tailored to suit your individual needs.



**FULL-TIME** 1 YEAR



Project Fresh, commissioned by Hampshire County Council, is a specialist programme of learning for students aged 14–16 (Year 10 and 11) who are in full-time education. Students on this programme have previously experienced social and emotional difficulties in coping within mainstream education settings. In most cases, the students have been disengaged from learning for some time.

Ultimately, the intention of the programme is to gradually support the integration of students into main college programmes. It is designed to be flexible and is based on the individual interests and aspirations of the student. Engagement starts with one x 1hr session building to a maximum of 25 hours per week.

Potential students for Project Fresh educational provision are referred to Totton College directly by Hampshire local authority through the consultation process based on the student's Education, Health and Care Plan. If you would like more information about how to be referred please contact Dean McKhuen: [dmckhuen@totton.ac.uk](mailto:dmckhuen@totton.ac.uk)

#### CASE STUDY: Luke

When Luke started at Project Fresh he presented high levels of anxiety at times. He had not left his house for eight months, often only communicating with family via text messages. Since he started at Project Fresh, his development and progression is nothing short of remarkable. With staff support, Luke has been able to recognise his self-confidence and has become a dramatic, forward thinking young man who has learnt how to find quite outstanding coping mechanisms to embrace change and enjoy new experiences.

From an academic point of view, Luke has engaged in English and maths in every single session as well as gaining a new found trust in allocated staff. Staff have taken time to understand Luke and tap into him as an individual, supporting him to become more tolerant, to improve socially, his self-confidence and to academically achieve and to be able to enjoy his life.

Luke now attends college three times a week for two hours per session, sharing a sense of humour, ambitions, wanting to learn to drive, taking exams, verbally communicating more with staff and his family and cooking at home. The feedback from his mum is this is that Luke is the happiest he has been for a very long time and is "a changed boy". Luke is now in the process of choosing his next options at Totton College for September, ideally moving into the college with support from Project Fresh.



## Questions you may have

### What course is best for me?

We want you to enjoy your time at Totton College and be successful in what you do. To make sure you can do that, we'll give you advice about which courses you can do. We'll help you work out which level suits you best, too.

### When do courses start?

Most courses start in September, but alternative start dates may be available. Check with us by calling **023 8087 4874**.

### Do I have to pay anything?

Courses are free for most learners. Depending on your age, you may be able to apply for a bursary to help with costs like travel and books. Bursaries are available and offer various levels of financial support. They are usually paid weekly if you attend. You may also be entitled to free meals. To find out more talk to us.

### How are courses assessed?

It depends on the course. Most of the time there are assignments and a portfolio of evidence, and some courses also require formal exams or practical assessments.

### Do I need any experience before starting?

Each course has its own entry requirements. You can start at an appropriate level that suits you and then move on to other levels as you progress. To start a Level 2 course, you will need to be working at Level 1 in your English and maths. We also expect you to show an interest in the subject of your choice. Every course is subject to interview.

### What is a typical day?

Life at Totton College is varied. A typical day may include timetabled lessons, a session with your Progression Coach and a free period for personal study.

### Can you help me find a work placement?

At Totton College, we're all about getting you ready for work. Our centres offer work-based traineeships and apprenticeships. Every student will have the opportunity to carry out at least 30 hours of relevant work experience. As a trainee, you can spend up to six months on a work placement that may lead to a job.

### Who can I contact if I need help?

Any of the Progression Coaches at Totton College will listen to your needs and offer you help. If you have personal matters you're worried about, you can talk to one of our safeguarding officers. You will find their contact details displayed in reception.

### How do I apply for a course?

If you'd like to join one of our courses, visit **totton.ac.uk** and apply online.

## Open evenings

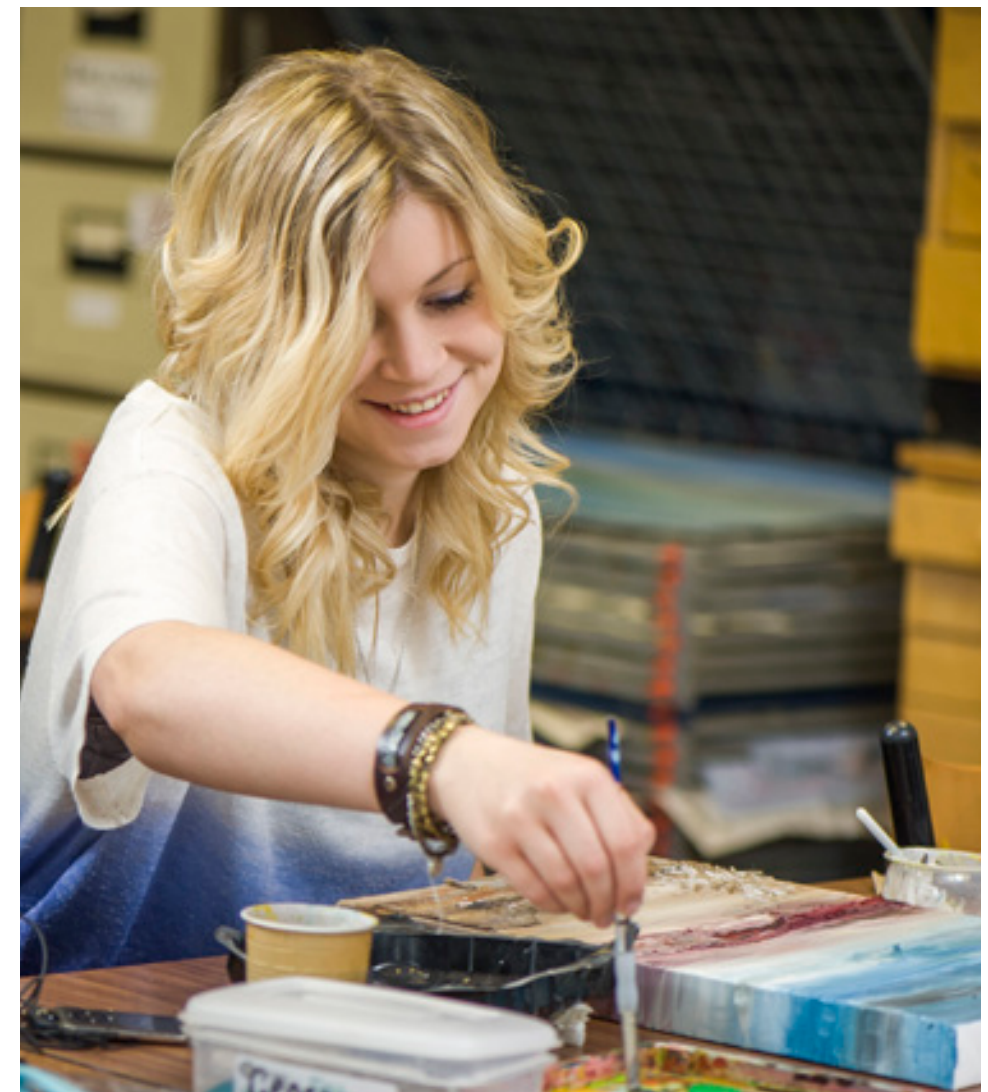
Come along to one of our open evenings to find out more about our courses, the college facilities, and to meet members of staff.

Wednesday **10 October 2018** – 5.30pm–7.30pm

Wednesday **14 November 2018** – 5.30pm–7.30pm

Wednesday **6 February 2019** – 5.30pm–7.30pm

Wednesday **5 June 2019** – 5.30pm–7.30pm







## Contact us

### Totton College

Water Lane, Totton, Southampton,  
SO40 3ZX

How to apply:

Call **023 8087 4874**

Email **info@totton.ac.uk**

Online: **totton.ac.uk**

## Opening times

### Term time:

Tuesday and Thursday 8:30–21:30

Monday, Wednesday and Friday 8:30–17:00

### Non-term time:

Monday to Friday 9:00–16:30



Totton College is part of **Nacro**, a social justice charity